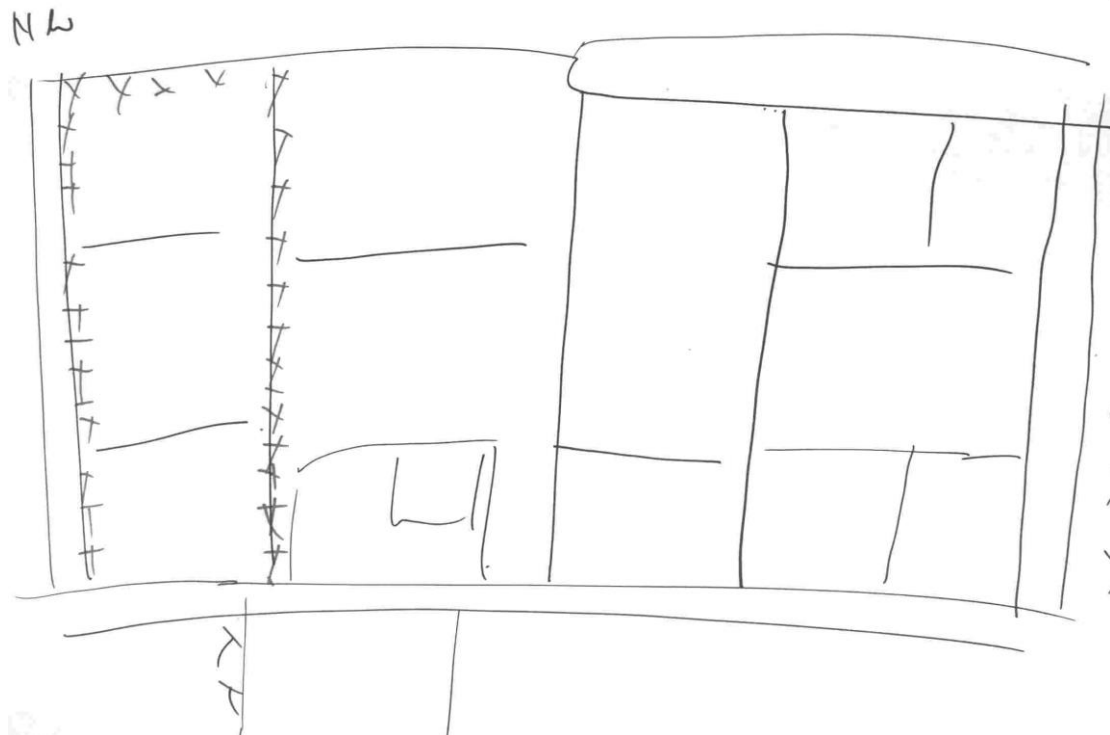
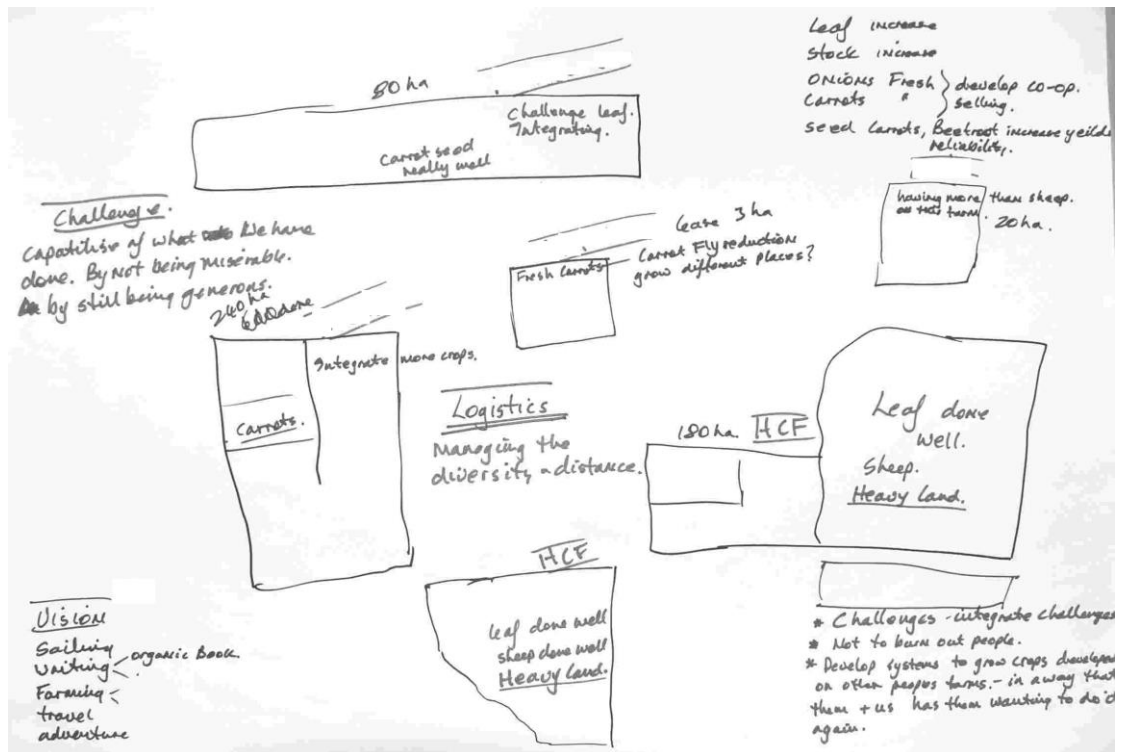


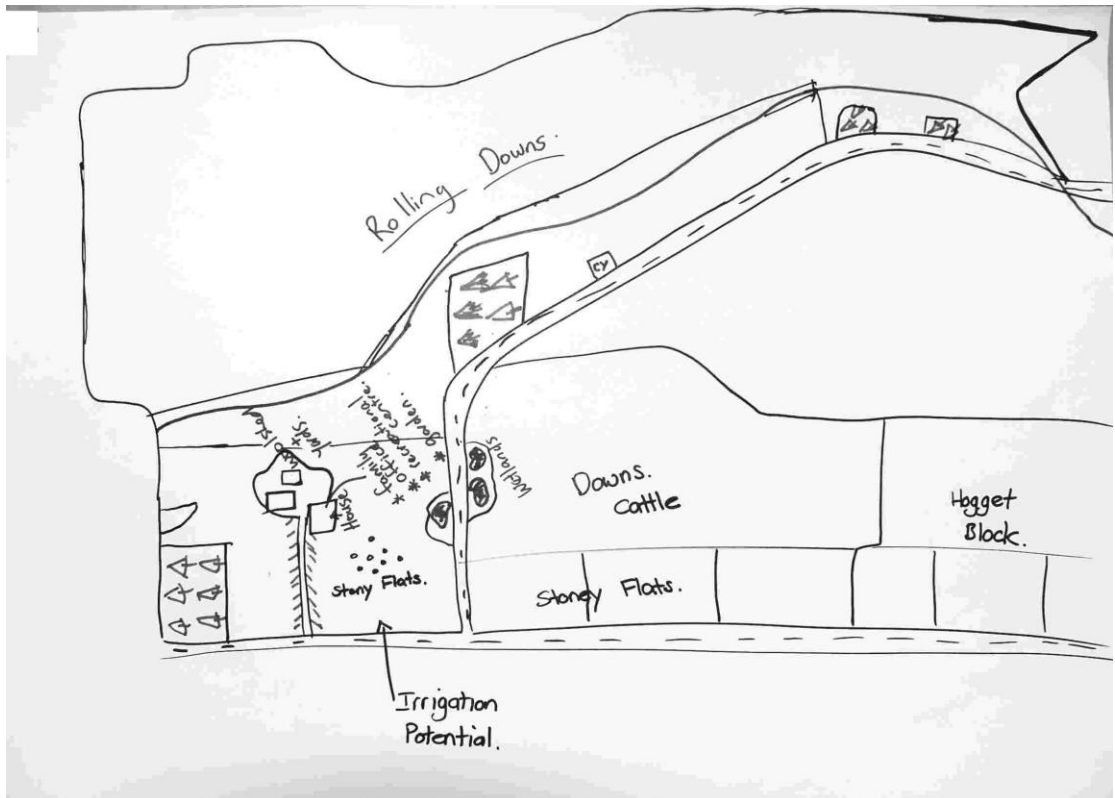
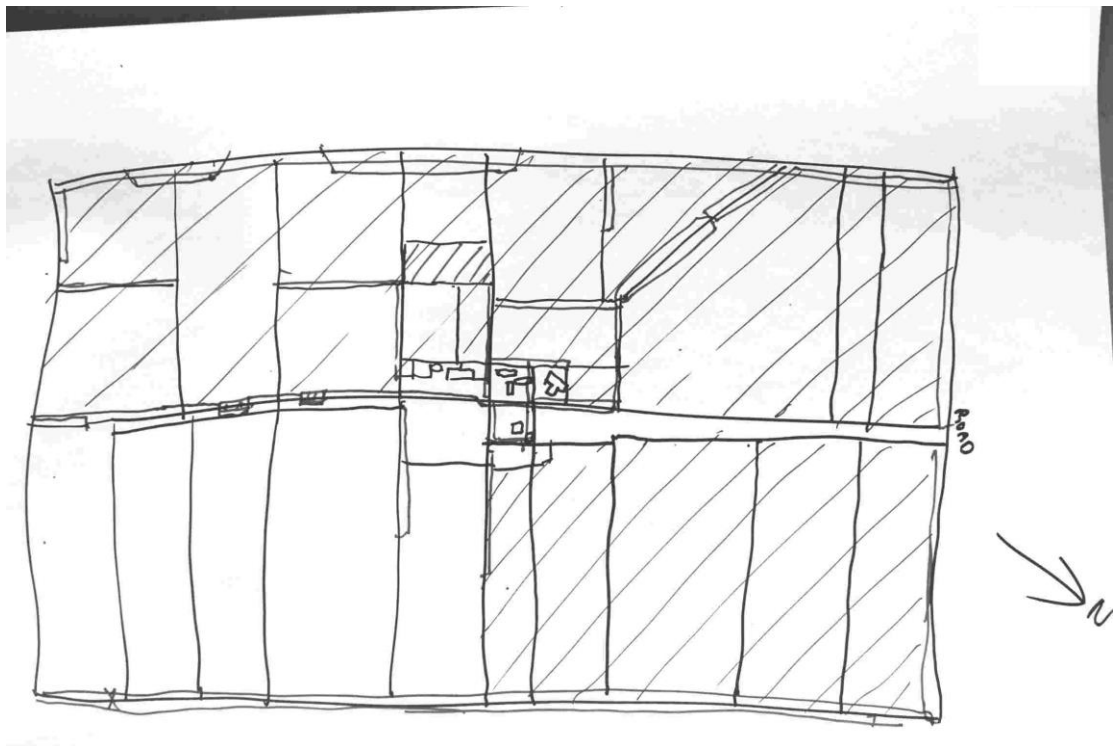
## Appendix 2: Sheep/beef farm maps

### Organic Sheep/beef farm maps (one converting)

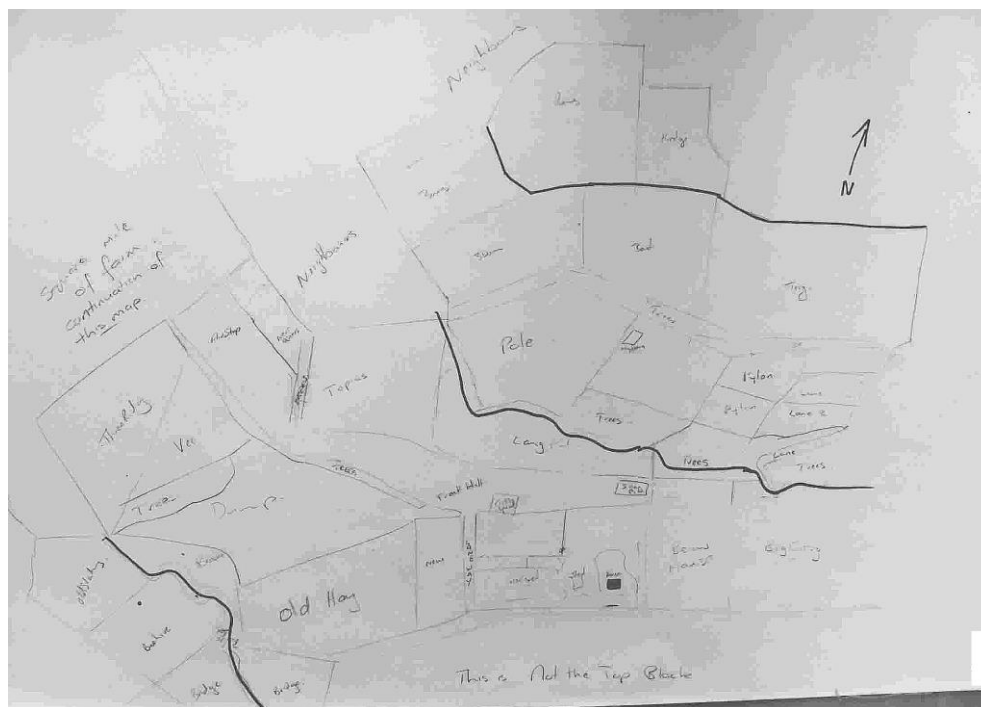




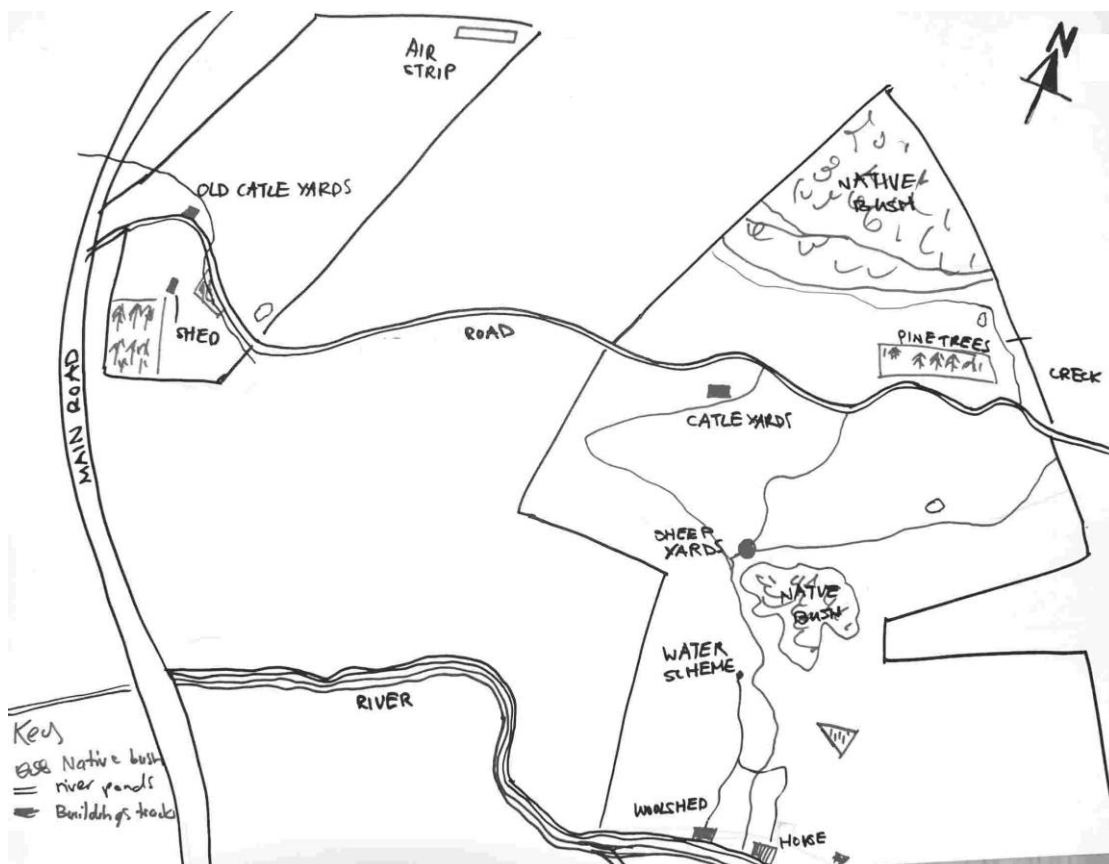




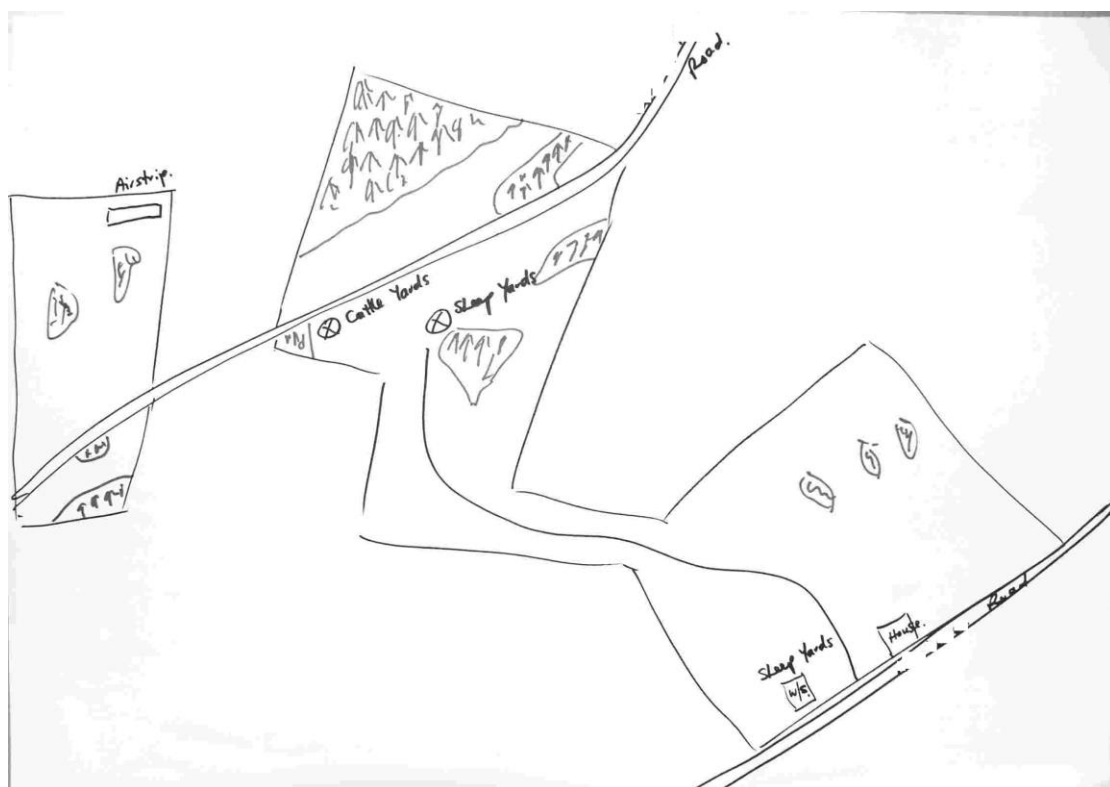
The following map was drawn in pencil.

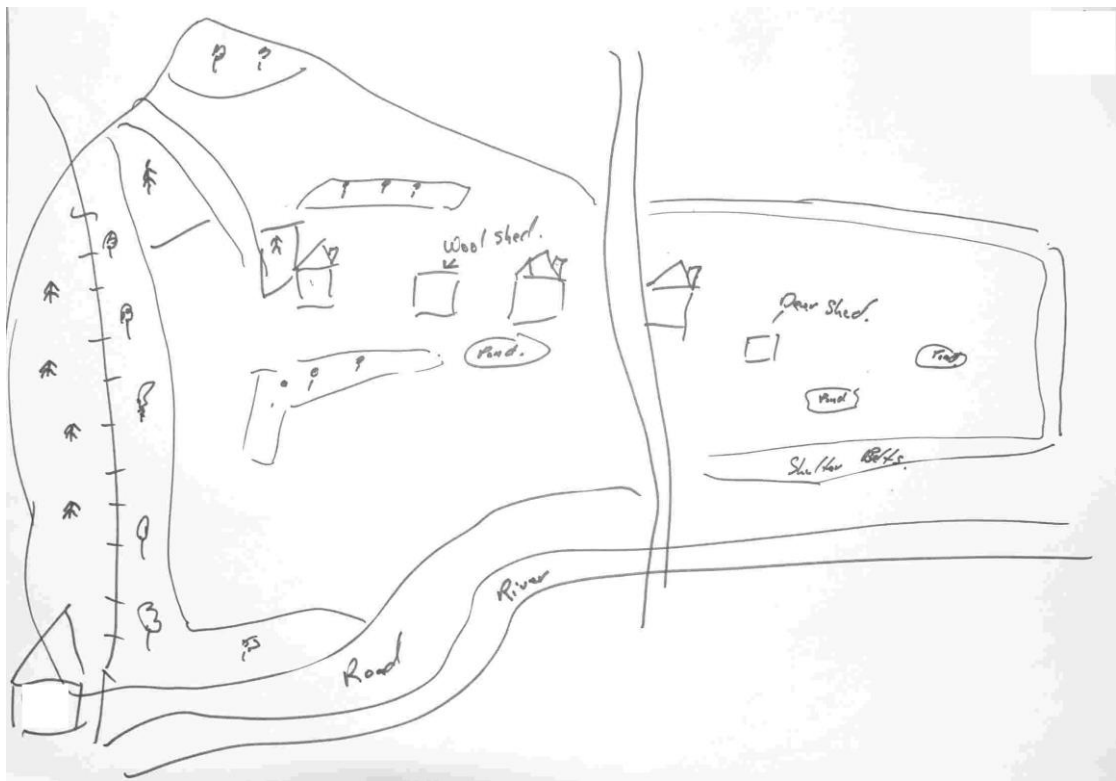
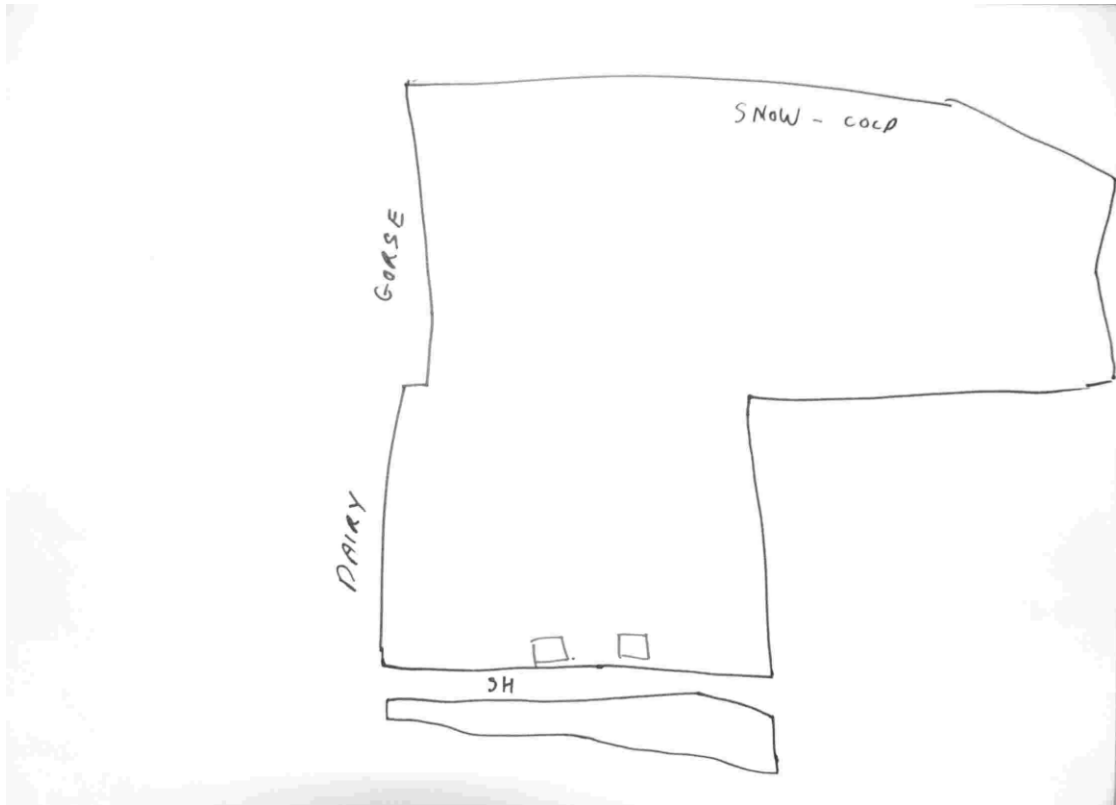


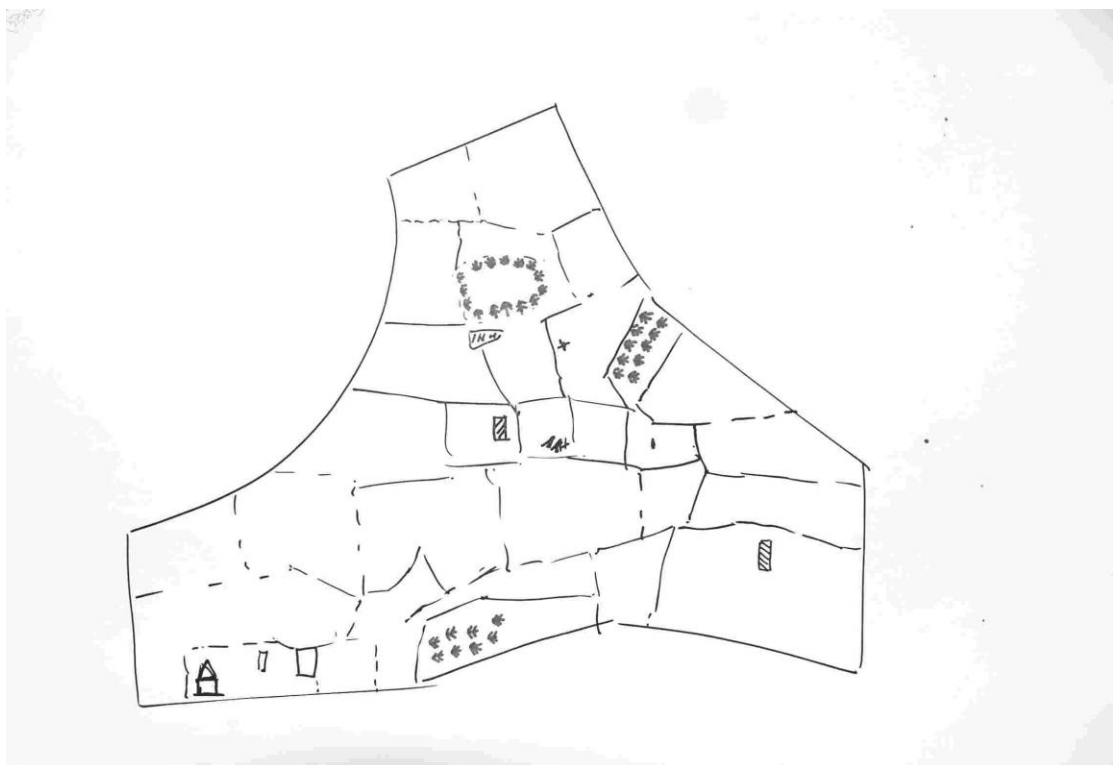
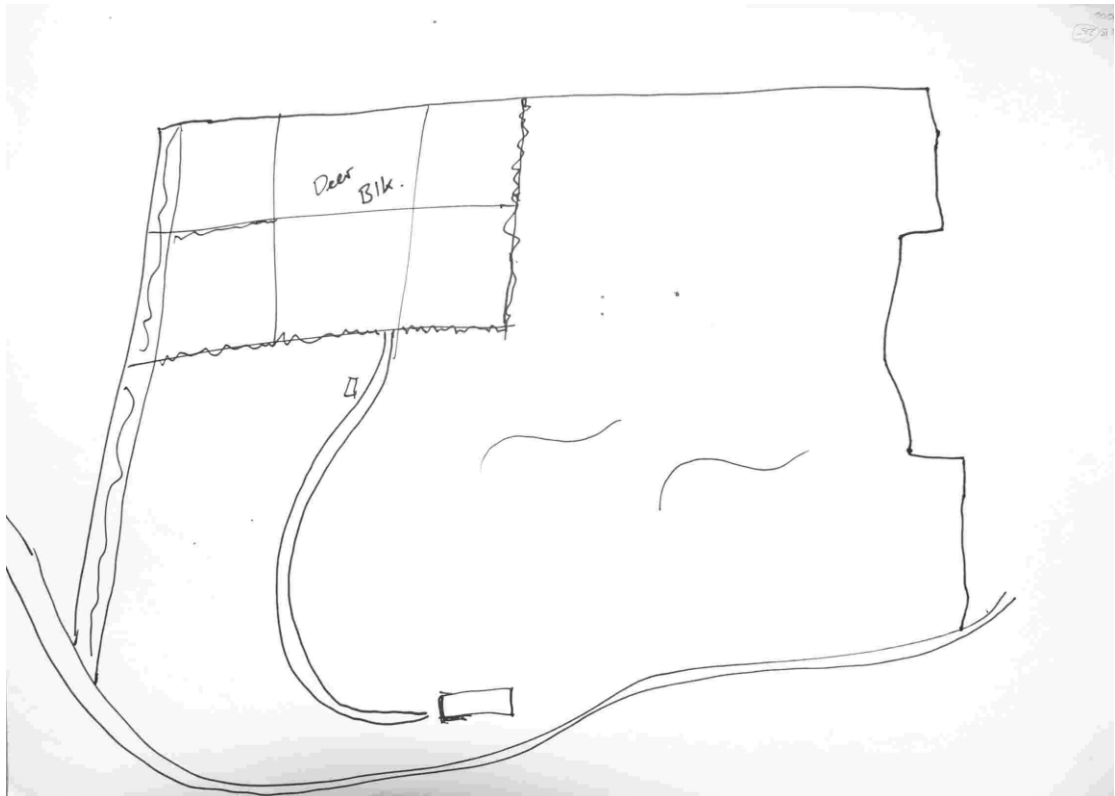
The three following maps are of the same farm drawn by different family members.



The following map was drawn in pencil.

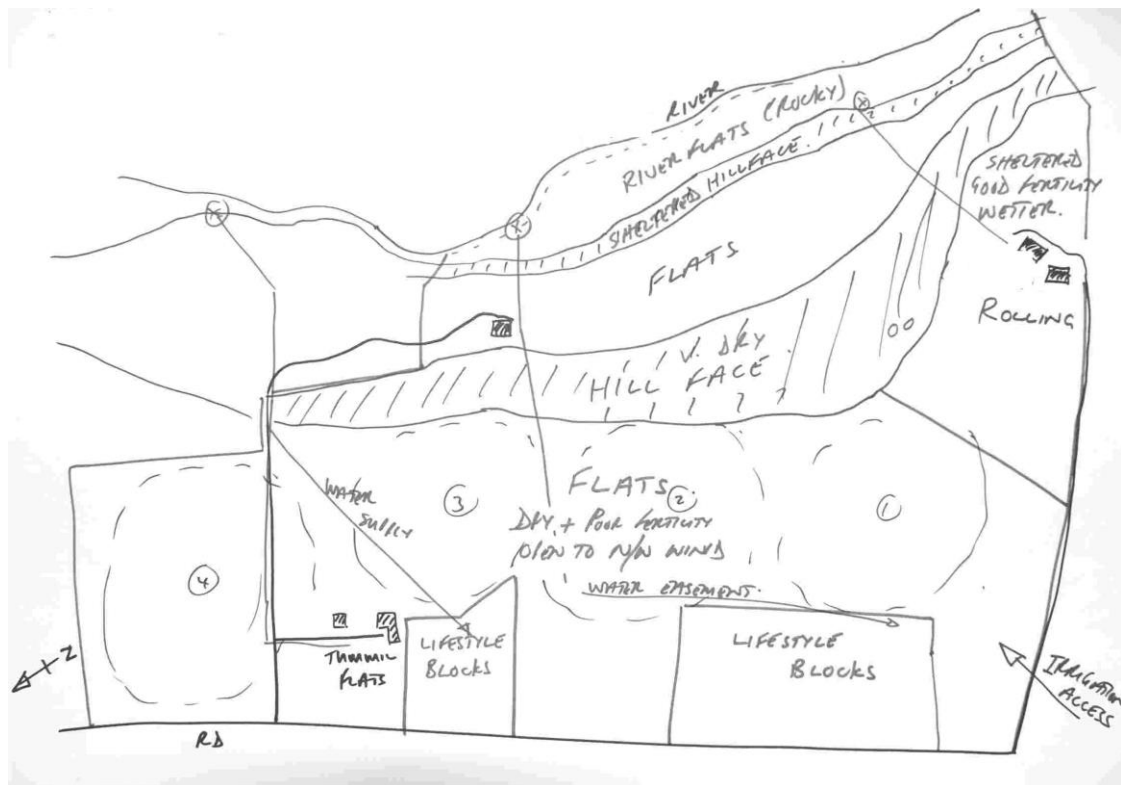




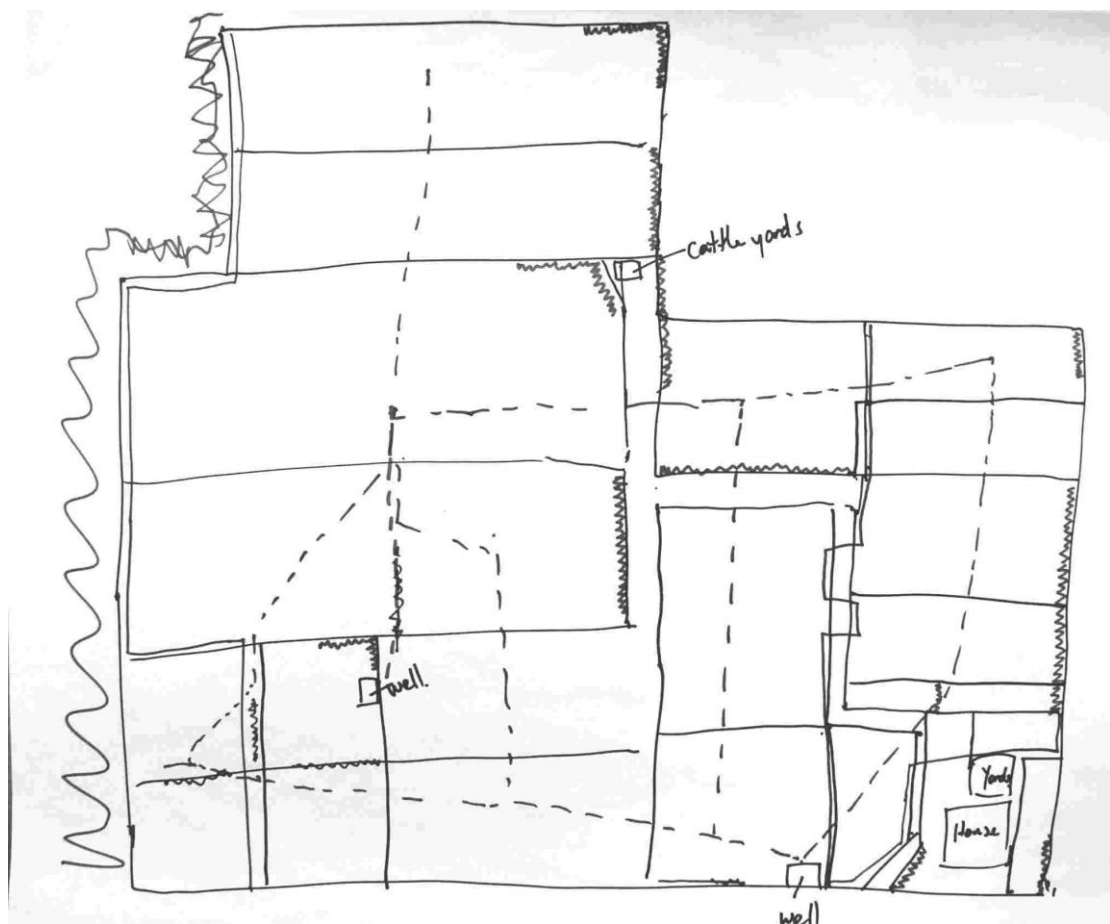
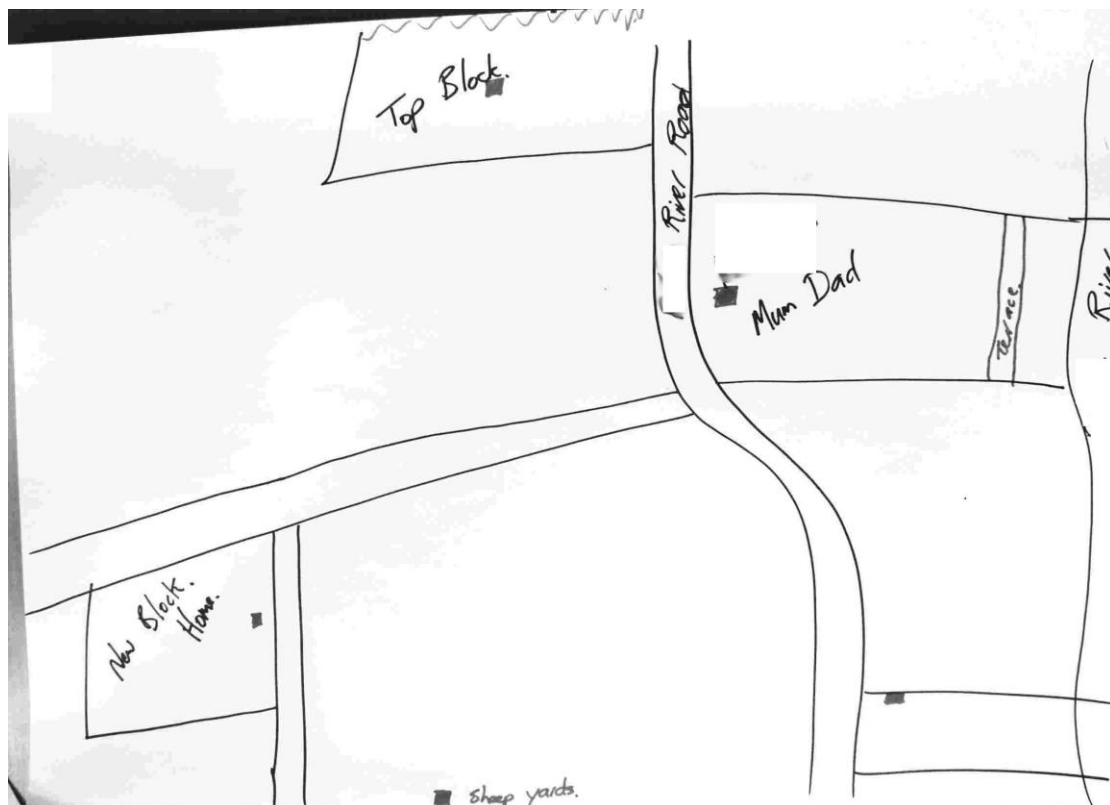


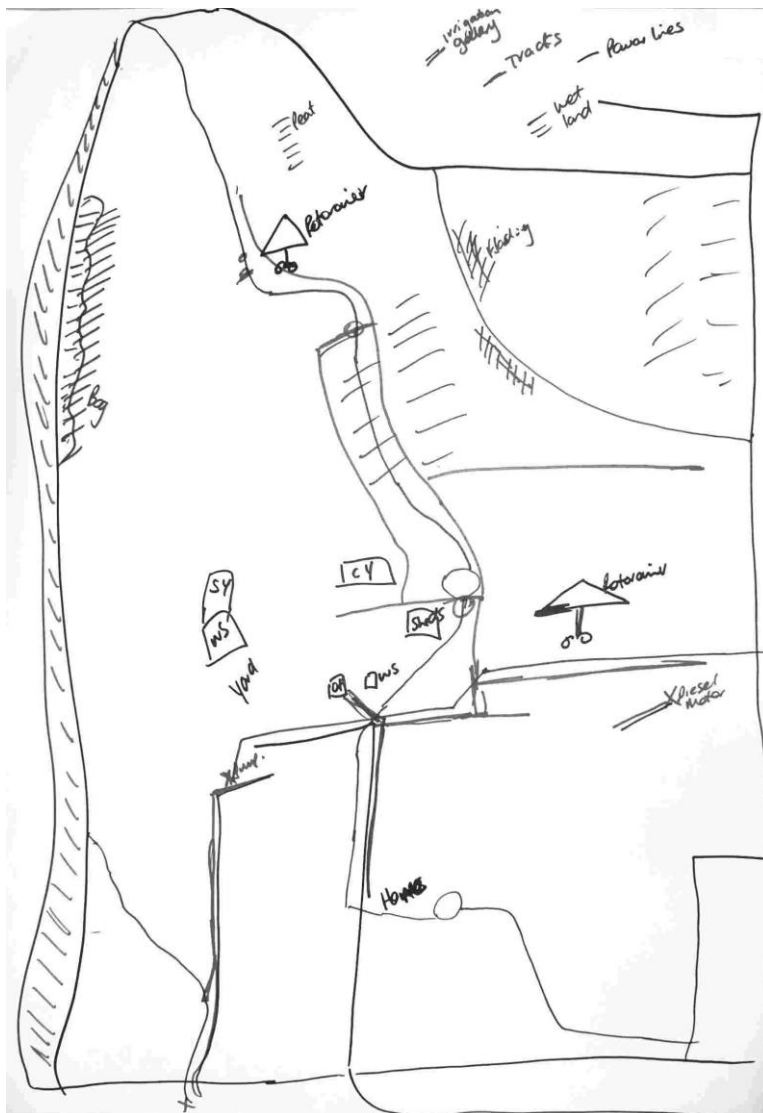


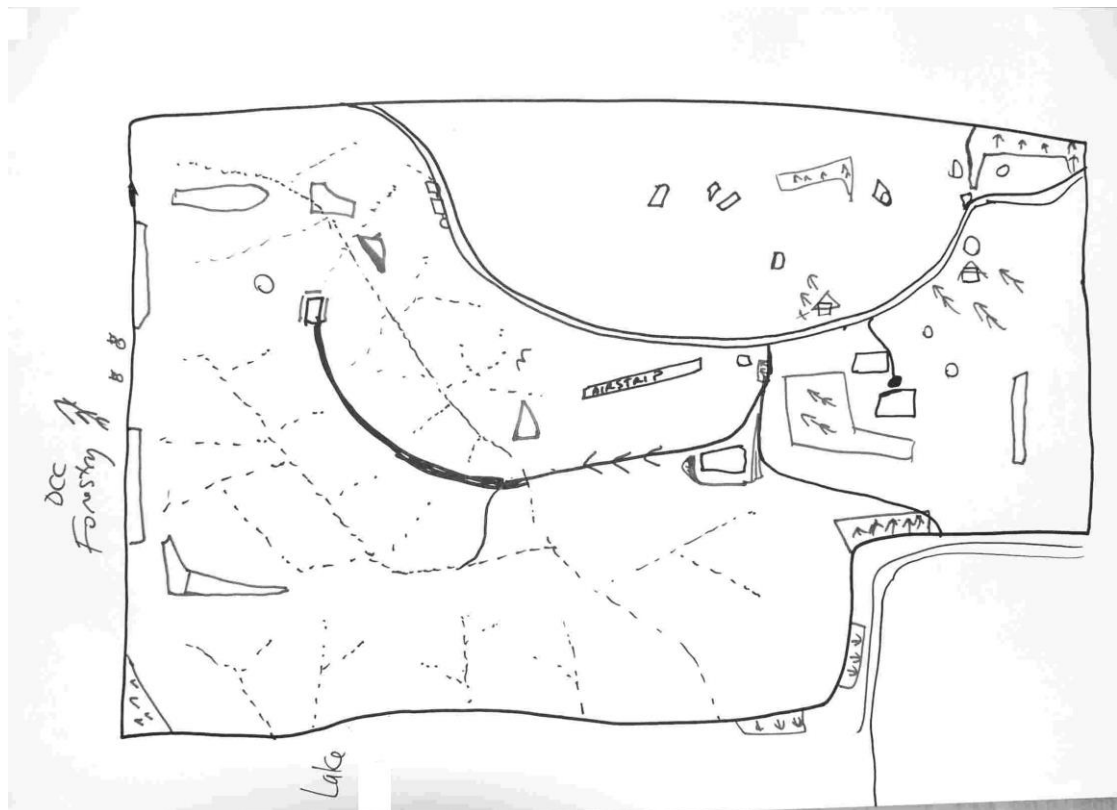
## Integrated sheep/beef farm maps

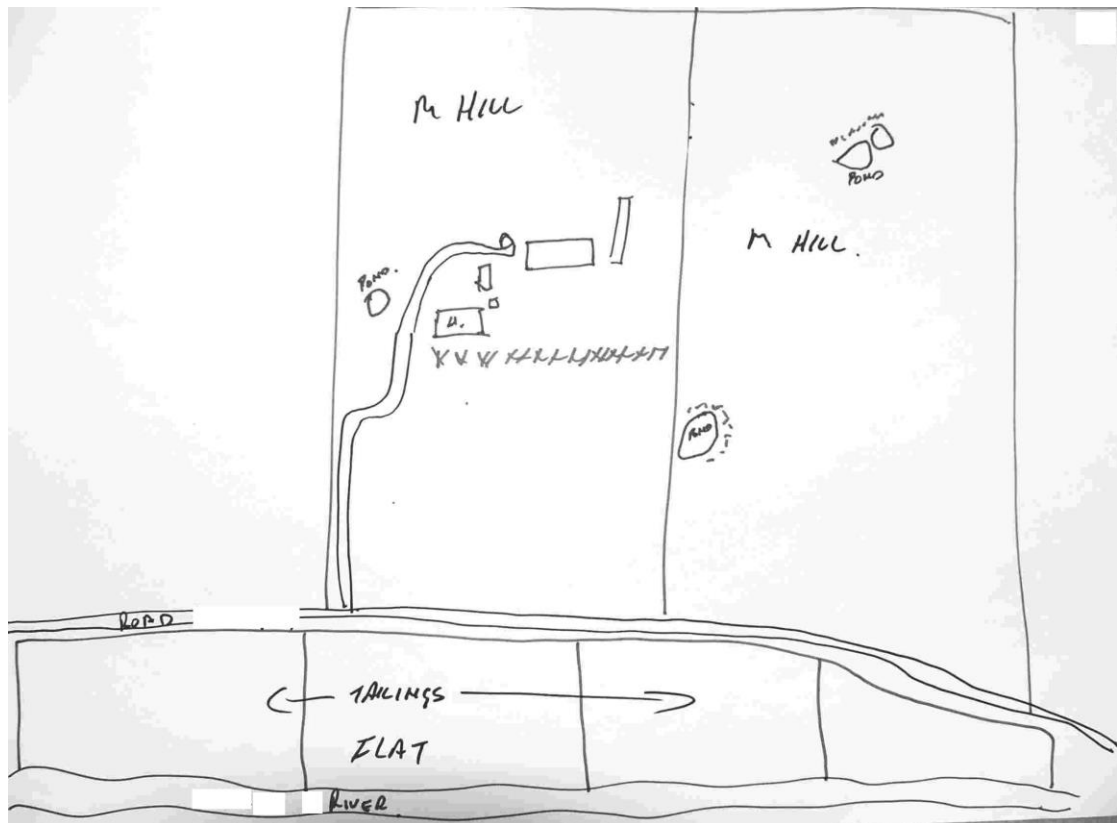


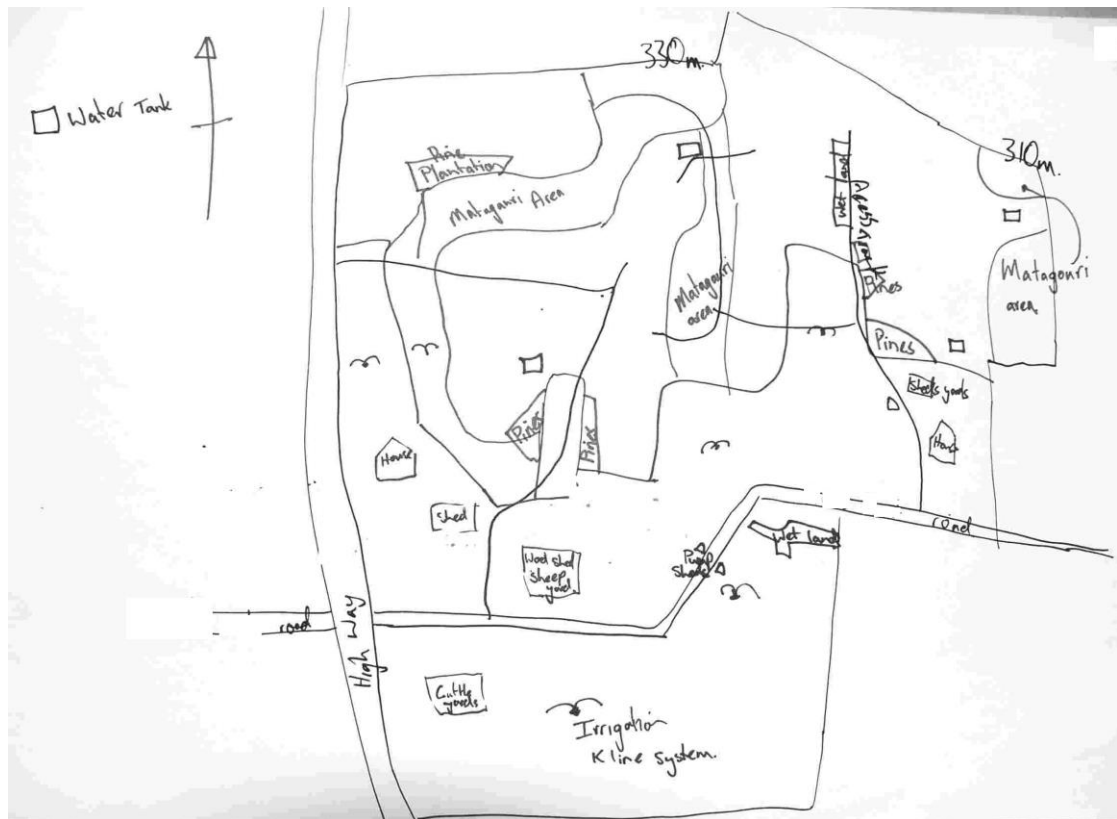




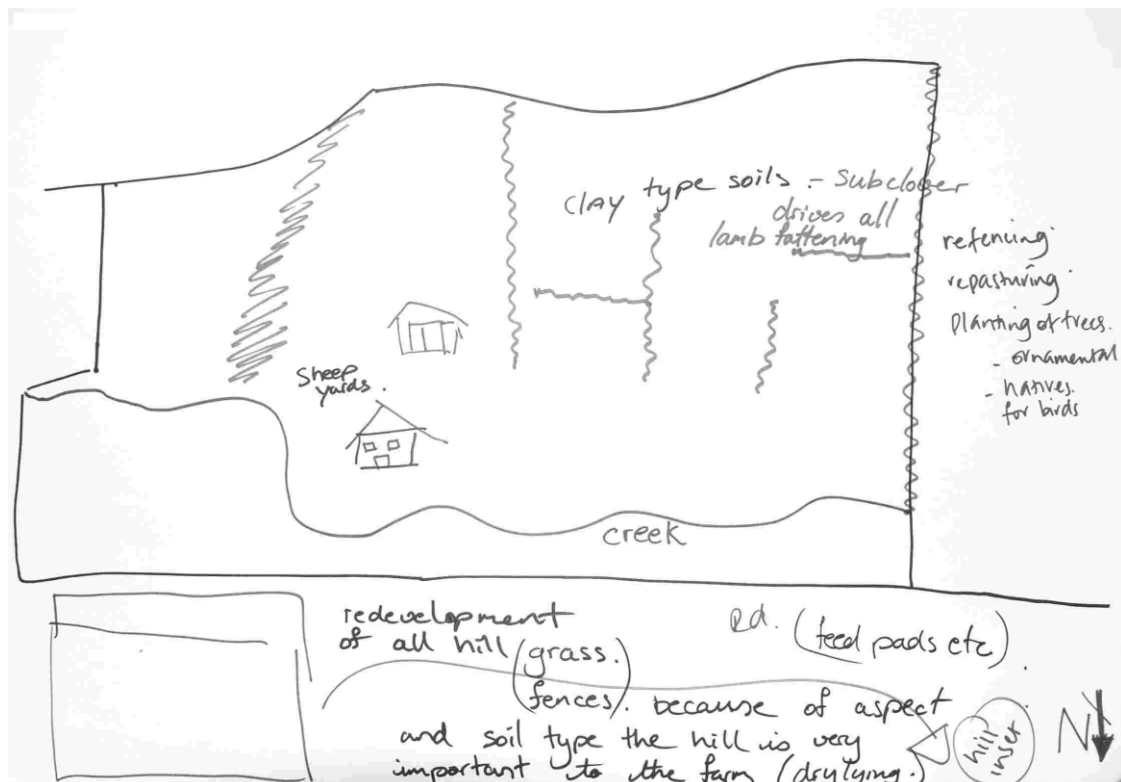






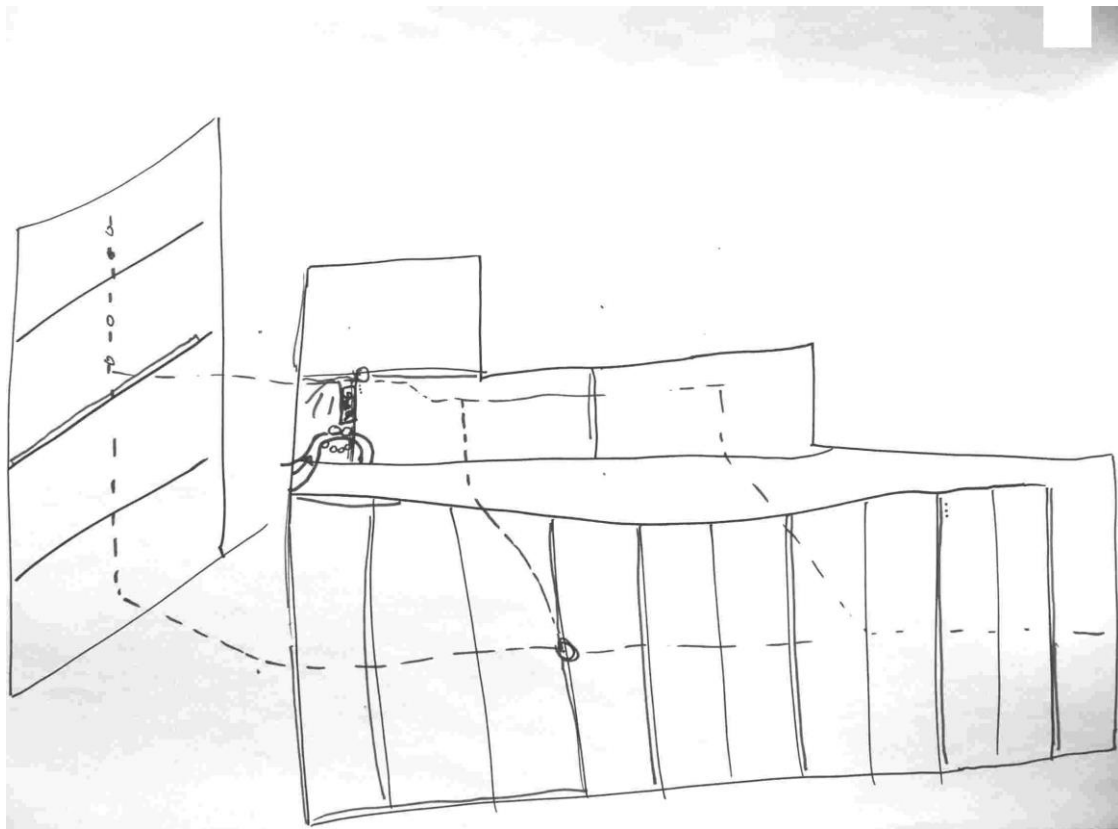


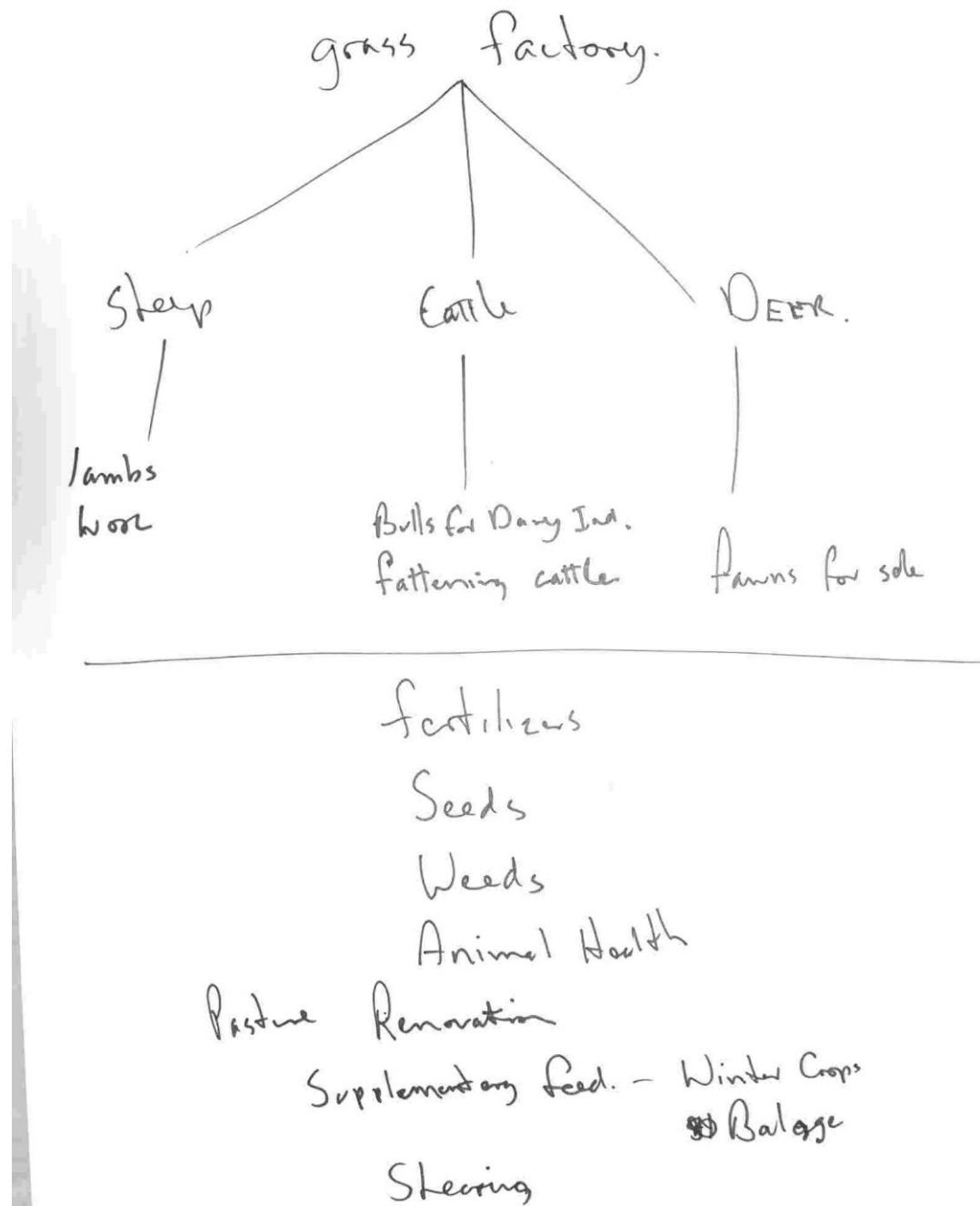
## Conventional sheep/beef farm maps



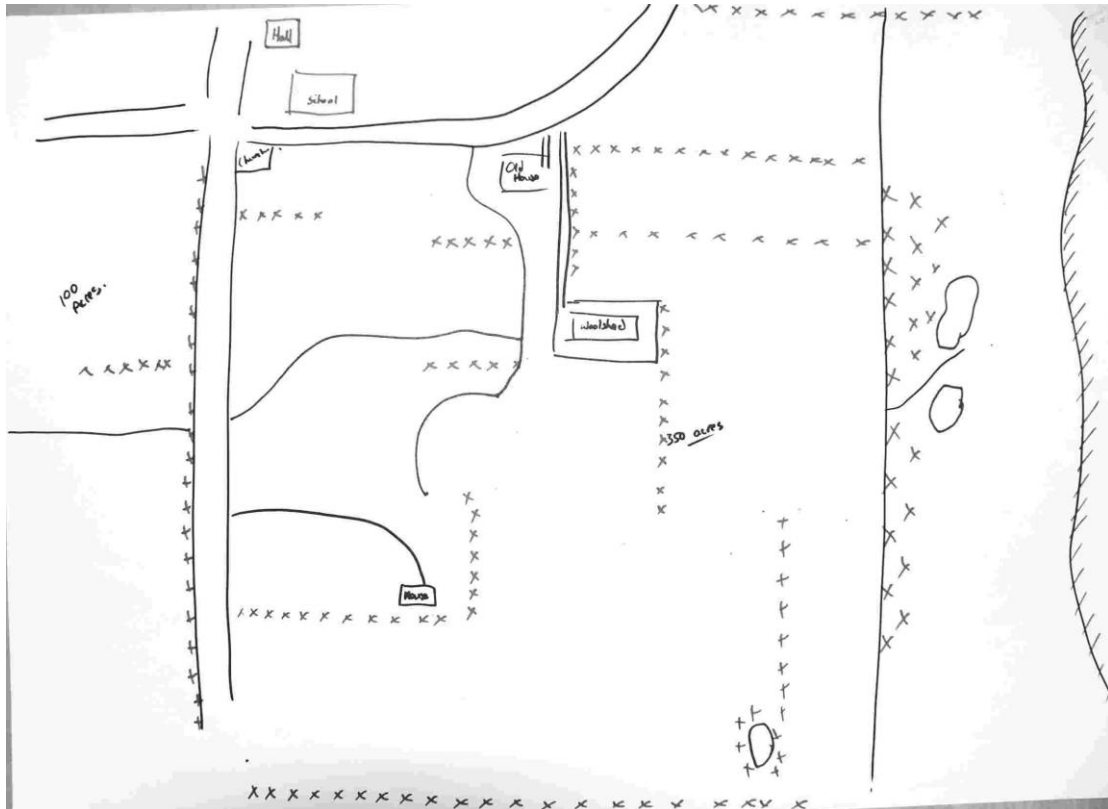












The following two maps are of different blocks of the same farm.

